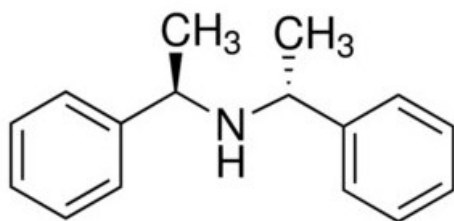


(+)-Bis[(R)-1-phenylethyl]amine, 99%

(+)-Bis[(R)-1-phenylethyl]amine, 99%

Identificativi Prodotto

Reference: 452823-1G



Descrizione

Dati Tecnici

CAS Number: 23294-41-9

Molecular Formula: C₁₆H₁₉N

Purity Grade: 99%

Molecular Weight: 225.33

Shipped on ICE/no ICE: STD

SAP Pack with Pack Qty: 1X1G